

W WISECO

Performance Products

V-Twin & Metric Cruiser 2007



.325

Ø .9277
.9273

Ø .970

Ø .990

.065

(1.23)

1.70



11.3°

VT07

Did you know?

Wiseco is the ONLY high-performance aftermarket forged piston manufacturer **in the U.S.A.** that...

- **Designs and builds all forge tooling in-house:** Typically, Wiseco designs and builds 100 or more new, state-of-the-art forging tools each year. This gives Wiseco the capability to produce leading edge forgings with the highest strength-to-weight ratio available. Wiseco has the largest inventory of purpose built dedicated forging tools available. Wiseco's forging design engineers are the most experienced and knowledgeable in the industry. This team of experts develop the most technically advanced forging tooling at our corporate head-quarters/manufacturing facility in Mentor, Ohio.



- **Forges every piston in-house:** Every Wiseco piston is forged one by one by our highly skilled operators in Mentor, Ohio. Wiseco is equipped with five forging presses, two of which are Ultra High Tech Isothermal forging presses. Wiseco stands alone as the only U.S. company in the forged piston aftermarket that has complete in-house control of the critical forging operation. All other aftermarket forged piston manufacturers in the U.S. outsource the forging operation.

- **Has an aerospace heat treatment facility on site:** After the forging operation, every Wiseco piston is heat treated in-house by Wiseco personnel to the most exacting specifications. This provides the material strength and toughness that Wiseco is famous for. We never outsource this critically important procedure.

- **Has the only on site Research & Development facility in the industry:**

Wiseco's in-house R&D facility is continually developing and testing the latest forged piston designs and innovations. It is the only fully staffed, dynamometer equipped R&D facility in the U.S. aftermarket forged piston industry. Wiseco's state-of-the-art dynamometers can be programmed to test any piston under the most severe conditions.



***You can count on Wiseco to be first
to market the very latest in world class forging designs***



Built on our legacy of championships for 65 years, Wiseco combines the most technologically advanced forged pistons on the market with the best high performance gaskets, rings, retainer clips and pins available.

Get the right parts at the right time, fast and easy.



Contents

883 Evo Sportster Overbore to 1200cc.....	2	Twin Cam 88 (107 cu. in.) Big Bore & Stroker (110 cu. in.).....	14
1000cc Iron Sportster & 1200cc Panhead & Shovelhead	3	Twin Cam 96 (103 cu. in.) Big Bore.....	15
1100 Evo Sportster (1986-87) & 1200 (1988-03)	4	Twin Cam 96 (110 cu. in.) & (117 cu. in.) Big Bore.....	16
1200 Evo Sportster (2004-07) Std. Bore & 3-13/16" Big Bore....	5	V-Rod 1320cc Big Bore	17
Buell 985cc & 1200cc Replacement.....	6	V-Rod Big Bore +1/4" Stroker Kits.....	18
Buell 1200cc Std. Bore & 3-13/16" Big Bore	7	V-Rod Big Bore +1/2" Stroker Kits.....	19
Buell 1200cc 3-13/16" Big Bore (Race Only).....	8	Honda VTX 1800 Big Bore	20
1340 Shovelhead (80 cu. in.).....	8	Yam. Royal Star Venture • Custom Midnight Star Big Bore....	20
1340 Evo Big Twin Replacement.....	9	Yamaha Road Star Big Bore	21
1340 Evo Big Twin w/ Screamin' Eagle Cyl. Head & 3 5/8" Big Bore	10	Yamaha Road Star • Road Star Warrior Big Bore	22
1340 Evo Big Twin Big Bore Sleeper Series & Twin Cam 88 ...	11	Ring Buyer's Guide	22
Twin Cam 88 (95 cu. in.) Big Bore.....	12	Replacement Piston Pins, Honing Brushes & Decals	23
Twin Cam 88 (100 cu. in.) Big Bore.....	13	Wiseco Apparel.....	24

This catalog uses the term "Harley-Davidson" and various model designations of Harley-Davidson, Inc. solely for reference and fitment purposes. No affiliation exists between Wiseco Piston Company, Inc. and Harley-Davidson, Inc., and the use of any trademarks or other proprietary designations of Harley-Davidson in this catalog should not be construed as indicating sponsorship or official approval by Harley-Davidson, Inc. of Wiseco Piston Company, Inc. or Wiseco products.

Thank you to Iron Works Magazine & Hatton-Brown Publishers, Inc. for supplying the photos used throughout this catalog.

883 Evo Sportster 1986-07 Overbore to 1200cc (73 cu. in.)

- No cylinder head modification required.
- Includes: Forged pistons, rings, retainer clips, & chrome piston pins.
- Complete top end gasket kit available as a separate component.
- Skirt coated.



8.5:1 Compression • Reverse Dome

Hastings Ring Package: Top Ring .062" • 2nd Ring .062" • Oil Ring .158"

KIT PART NO. \$280.08 (D50861)	CC DISPL.	BORE	STROKE	REPL. PISTON \$140.04 (D2048)	REPL. RING SET \$27.95 (D7761)	REPL. RETAINER CLIP & PISTON PIN	GASKET KIT (Optional) \$113.53 (D2186)
K1723	1200cc	3.498"/STD	3.812"	4691PS	3497X	W5731	1986-87: W5911
K1724	1207cc	3.508"/.010		4691P1	3507X	\$2.00 (D021)	1988-90: W5912
K1725	1214cc	3.518"/.020		4691P2	3517X	S530 \$13.95 (D738)	1991-03: W5918 2004-07: W6378

DOMESPECIFICATION
Valve pocket dimensions are measured from Deck Height

Dome Volume: -13.7cc
Intake Pocket
Depth: -.215"
Diameter: 2.100"
Exhaust Pocket
Depth: -.215"
Diameter: 2.100"

9.5:1 Compression • Reverse Dome

Hastings Ring Package: Top Ring .062" • 2nd Ring .062" • Oil Ring .158"

KIT PART NO. \$280.08 (D50861)	CC DISPL.	BORE	STROKE	REPL. PISTON \$135.96 (D8518)	REPL. RING SET \$27.95 (D7761)	REPL. RETAINER CLIP & PISTON PIN	GASKET KIT (Optional) \$113.53 (D2186)
K1655	1200cc	3.498"/STD	3.812"	4718PS	3497X	W5731	1986-87: W5911
K1656	1207cc	3.508"/.010		4718P1	3507X	\$2.00 (D021)	1988-90: W5912
K1657	1214cc	3.518"/.020		4718P2	3517X		1991-03: W5918
K1658	1221cc	3.528"/.030		4718P3	3527X	S530	2004-07: W6378
K1659	1228cc	3.538"/.040		4718P4	3537X	\$13.95 (D738)	

DOMESPECIFICATION
Valve pocket dimensions are measured from Deck Height

Dome Volume: -11.2cc
Intake Pocket
Depth: -.215"
Diameter: 2.100"
Exhaust Pocket
Depth: -.215"
Diameter: 2.100"

10:1 Compression • Reverse Dome

Hastings Ring Package: Top Ring .062" • 2nd Ring .062" • Oil Ring .158"

KIT PART NO. \$280.08 (D50861)	CC DISPL.	BORE	STROKE	REPL. PISTON \$135.96 (D8518)	REPL. RING SET \$27.95 (D7761)	REPL. RETAINER CLIP & PISTON PIN	GASKET KIT (Optional) \$113.53 (D2186)
K1682	1200cc	3.498"/STD	3.812"	4719PS	3497X	W5731	1986-87: W5911
K1683	1207cc	3.508"/.010		4719P1	3507X	\$2.00 (D021)	1988-90: W5912
K1684	1214cc	3.518"/.020		4719P2	3517X	S530 \$13.95 (D738)	1991-03: W5918 2004-07: W6378

DOMESPECIFICATION
Valve pocket dimensions are measured from Deck Height

Dome Volume: -8.5cc
Intake Pocket
Depth: -.225"
Diameter: 2.100"
Exhaust Pocket
Depth: -.225"
Diameter: 2.100"





1000 Iron Sportster 1972-85

- Will not fit XR style head.
- Includes: Forged pistons, rings, retainer clips & chrome piston pins.
- Complete top end gasket kit available as a separate component.



10:1 Compression • Domed

Hastings Ring Package: Top Ring .062" • 2nd Ring .062" • Oil Ring .158"

KIT PART NO. \$214.22 (D35821)	CC DISPL.	BORE	STROKE	REPL. PISTON \$107.11 (D7246)	REPL. RING SET \$27.95 (D7761)	REPL. RETAINER CLIP & PISTON PIN	GASKET KIT (Optional)
K1600	1000cc	3.188"/STD	3.812"	4011PS	3188X	CW20	1972-E73: W5910
K1601	1003cc	3.198"/.010		4011P1	3198X	\$2.00 (D021)	L73-E76: W5915
K1602	1006cc	3.208"/.020		4011P2	3208X		\$31.21 (D3781)
K1603	1016cc	3.218"/.030		4011P3	3218X	S521	1976-85: W6024
K1604	1022cc	3.228"/.040		4011P4	3228X	\$13.95 (D738)	\$32.42 (D5491)

DOME SPECIFICATION <i>Valve pocket dimensions are measured from Deck Height.</i>	
Dome Volume:	+50.7cc
Intake Pocket	
Depth:	-.086"
Diameter:	2.000"
Exhaust Pocket	
Depth:	No V.P.
Diameter:	No V.P.



1200 (74 cu. in.) FL-FLH Panhead 1948-65 & Shovelhead 1966-77

- Includes: Forged pistons, rings, retainer clips, and chrome piston pins.
- Complete top end gasket kit available as a separate component.
- K1610, K1611 and K1612 fit Shovelhead only.

9:1 Compression • Domed

Hastings Ring Package: Top Ring .062" • 2nd Ring .062" • Oil Ring .158"

KIT PART NO. \$214.22 (D35821)	CC DISPL.	BORE	STROKE	REPL. PISTON \$107.11 (D7246)	REPL. RING SET \$27.95 (D7761)	REPL. RETAINER CLIP & PISTON PIN	GASKET KIT (Optional)
K1605	1200cc	3.437"/STD	3.968"	4012PS	3437X	W5731	W5909
K1606	1213cc	3.447"/.010		4012P1	3447X	\$2.00 (D021)	1948-65
K1607	1220cc	3.457"/.020		4012P2	3457X		
K1608	1227cc	3.467"/.030		4012P3	3467X	S521	W5916
K1609	1234cc	3.477"/.040		4012P4	3477X	\$13.95 (D738)	1966-77
* K1610	1241cc	3.487"/.050		4012P5	3487X		
* K1611	1249cc	3.497"/.060		4012P6	3497X		
* K1612	1263cc	3.517"/.080		4012P8	3517X		

DOME SPECIFICATION <i>Valve pocket dimensions are measured from Deck Height.</i>	
Dome Volume:	+52.0cc
Intake Pocket	
Depth:	-.050"
Diameter:	2.045"
Exhaust Pocket	
Depth:	-.050"
Diameter:	1.800"

* Shovelhead only

**1200 Evo Sportster 1988-03
(73 cu. in.)**

1100 Evo Sportster 1986-87

All Evo Sportster & Buell models with Stock 1200 Heads



- No cylinder head modification required.
- Includes: Forged pistons, rings, retainer clips, & chrome piston pins.
- Complete top end gasket kit available as a separate component.

9:1 Compression • Flat Top

Hastings Ring Package: Top Ring .062" • 2nd Ring .062" • Oil Ring .158"

KIT PART NO. \$272.54 (D25361)	CC DISPL.	BORE	STROKE	REPL. PISTON \$136.27 (D6718)	REPL. RING SET \$27.95 (D7761)	REPL. RETAINER CLIP & PISTON PIN	GASKET KIT (Optional) \$113.53 (D2186)
K1660	1200cc	3.498"/STD	3.812"	4720PS	3497X	W5731	1986-87: W5911
K1661	1207cc	3.508"/.010		4720P1	3507X	\$2.00 (D021)	1988-90: W5912
K1662	1214cc	3.518"/.020		4720P2	3517X		1991-03: W5918
K1663	1221cc	3.528"/.030		4720P3	3527X	S530	
K1664	1228cc	3.538"/.040		4720P4	3537X	\$13.95 (D738)	

DOMESPECIFICATION
Valve pocket dimensions are measured from Deck Height

Dome Volume: -2.8cc
Intake Pocket
Depth: -.214"
Diameter: 2.100"
Exhaust Pocket
Depth: -.214"
Diameter: 2.100"

10.5:1 Compression • Domed

Hastings Ring Package: Top Ring .062" • 2nd Ring .062" • Oil Ring .158"

KIT PART NO. \$272.54 (D25361)	CC DISPL.	BORE	STROKE	REPL. PISTON \$136.27 (D6718)	REPL. RING SET \$27.95 (D7761)	REPL. RETAINER CLIP & PISTON PIN	GASKET KIT (Optional) \$113.53 (D2186)
K1685	1200cc	3.498"/STD	3.812"	4721PS	3497X	W5731	1986-87: W5911
K1686	1207cc	3.508"/.010		4721P1	3507X	\$2.00 (D021)	1988-90: W5912
K1687	1214cc	3.518"/.020		4721P2	3517X		1991-03: W5918
K1688	1221cc	3.528"/.030		4721P3	3527X	S530	
K1689	1228cc	3.538"/.040		4721P4	3537X	\$13.95 (D738)	

DOMESPECIFICATION
Valve pocket dimensions are measured from Deck Height

Dome Volume: +6cc
Intake Pocket
Depth: -.225"
Diameter: 2.100"
Exhaust Pocket
Depth: -.225"
Diameter: 2.100"





1200cc Sportster 2004-07 Standard Bore (73 cu. in.)

- Includes: Forged pistons, rings, retainer clips, chrome piston pins.
- Complete top end gasket kit available as a separate component.



10.5:1 Compression • Skirt Coated

Hastings Ring Package: Top Ring .062" • 2nd Ring .062" • Oil Ring .158"

KIT PART NO. \$286.06 (D46171)	CC DISPL.	BORE	STROKE	REPL. PISTON \$143.03 (D2858)	REPL. RING SET \$27.95 (D7761)	REPL. RETAINER CLIP & PISTON PIN	GASKET KIT (Optional) \$93.48 (D9065)
K1746	1200cc	3.498"/STD	3.812"	4891PS	3497X	W5731	2004-07: W6391
K1747	1207cc	3.508"/.010		4891P1	3507X	\$2.00 (D021)	
K1748	1214cc	3.518"/.020		4891P2	3517X	\$13.95 (D738)	

DOME SPECIFICATION <i>Valve pocket dimensions are measured from Deck Height.</i>	
Dome Volume:	+3.63cc
Intake Pocket	
Depth:	-.167"
Diameter:	2.100"
Exhaust Pocket	
Depth:	-.167"
Diameter:	2.100"

12:1 Compression • Domed • RACE ONLY

Hastings Ring Package: Top Ring .062" • 2nd Ring .062" • Oil Ring .158"

KIT PART NO. \$286.06 (D46171)	CC DISPL.	BORE	STROKE	REPL. PISTON \$143.03 (D2858)	REPL. RING SET \$27.95 (D7761)	REPL. RETAINER CLIP & PISTON PIN	GASKET KIT (Optional) \$93.48 (D9065)
K1737	1200cc	3.498"/STD	3.812"	4832PS	3497X	W5731	2004-07: W6391
K1738	1207cc	3.508"/.010		4832P1	3507X	\$2.00 (D021)	
K1739	1214cc	3.518"/.020		4832P2	3517X	\$13.95 (D738)	

DOME SPECIFICATION <i>Valve pocket dimensions are measured from Deck Height.</i>	
Dome Volume:	+12.3cc
Intake Pocket	
Depth:	-.167"
Diameter:	2.000"
Exhaust Pocket	
Depth:	-.167"
Diameter:	2.000"



1200cc Sportster 2004-07 3¹³/₁₆" Big Bore Kit (88 cu. in.)

- Cases must be bored to accept big bore cylinders.
- Includes: Forged pistons, rings, retainer clips & chrome piston pins.
- Must use aftermarket big bore cylinders.
- The "XN" ring package is designed for use in "Nikasil" plated bores only.
- Head and base gaskets available as separate components.

10.5:1 Compression • Reverse Dome

Wiseco Ring Package: Top Ring 1.5mm • 2nd Ring 1.5mm • Oil Ring 3.0mm

KIT PART NO. \$306.50 (D09381)	CC DISPL.	BORE	STROKE	REPL. PISTON \$153.25 (D5919)	REPL. RING SET \$27.95 (D7761)	REPL. RETAINER CLIP & PISTON PIN	GASKET KIT (Optional) \$65.29 (D7193)
K1735	1426cc	3.8125"/STD	3.812"	4830PS	38125XN	W5731 \$2.00 (D021) S572 \$13.95 (D738)	2004-07: W6003

DOME SPECIFICATION <i>Valve pocket dimensions are measured from Deck Height.</i>	
Dome Volume:	-6.8cc
Intake Pocket	
Depth:	-.167"
Diameter:	2.000"
Exhaust Pocket	
Depth:	-.167"
Diameter:	2.000"

Buell XB9R Firebolt & XB9S Lightning

- Includes: Forged pistons, rings, retainer clips & chrome piston pins.
- Complete top end gasket kit available as a separate component.



(60 cu. in.) 10:1 Compression • Standard Bore • Domed

Hastings Ring Package: Top Ring .062" • 2nd Ring .062" • Oil Ring .158"

KIT PART NO. \$283.50 (D01071)	CC DISPL.	BORE	STROKE	REPL. PISTON \$141.75 (D5058)	REPL. RING SET \$27.95 (D7761)	REPL. RETAINER CLIP & PISTON PIN	GASKET KIT (Optional) \$113.53 (D2186)	DOMES SPECIFICATION <i>Valve pocket dimensions are measured from Deck Height.</i> Dome Volume: +12.3cc Intake Pocket Depth: -.167" Diameter: 2.000" Exhaust Pocket Depth: -.167" Diameter: 2.000"
K1740 K1741	985cc 990cc	3.498"/STD 3.508"/.010	3.126"	4833PS 4833P1	3497X 3507X	W5731 \$2.00 (D021) S572 \$13.95 (D738)	W5918	



S1 White Lightning, S3/S3T Thunderbolt & Buell Models *(With 101HP Thunderstorm Heads installed)*

- No cylinder head modification required.
- Includes: Forged pistons, rings, retainer clips & chrome piston pins.
- Complete top end gasket kit available as a separate component.

10:1 Compression • Domed

Hastings Ring Package: Top Ring .062" • 2nd Ring .062" • Oil Ring .158"

KIT PART NO. \$272.54 (D25361)	CC DISPL.	BORE	STROKE	REPL. PISTON \$136.27 (D6718)	REPL. RING SET \$27.95 (D7761)	REPL. RETAINER CLIP & PISTON PIN	GASKET KIT (Optional) \$113.53 (D2186)	DOMES SPECIFICATION <i>Valve pocket dimensions are measured from Deck Height.</i> Dome Volume: +7.0cc Intake Pocket Depth: -.214" Diameter: 2.100" Exhaust Pocket Depth: -.214" Diameter: 2.100"
K1700 K1701 K1702	1200cc 1207cc 1214cc	3.498"/STD 3.508"/.010 3.518"/.020	3.812"	4728PS 4728P1 4728P2	3497X 3507X 3517X	W5731 \$2.00 (D021) S530 \$13.95 (D738)	W5918	



1200cc Buell XB12R Firebolt & XB12S Lightning

- Includes: Forged pistons, rings, retainer clips & chrome piston pins.
- Complete top end gasket kit available as a separate component.



(73 cu. in.) 12:1 Compression • Standard Bore • Domed • RACE ONLY

Hastings Ring Package: Top Ring .062" • 2nd Ring .062" • Oil Ring .158"

KIT PART NO. \$286.06 (D46171)	CC DISPL.	BORE	STROKE	REPL. PISTON \$143.03 (D2858)	REPL. RING SET \$27.95 (D7761)	REPL. RETAINER CLIP & PISTON PIN	GASKET KIT (Optional) \$93.48 (D9065)	DOME SPECIFICATION <i>Valve pocket dimensions are measured from Deck Height.</i>
K1737	1200cc	3.498"/STD	3.812"	4832PS	3497X	W5731	W6392	Dome Volume: +12.3cc
K1738	1207cc	3.508"/.010		4832P1	3507X	\$2.00 (D021)		Intake Pocket Depth: -.167" Diameter: 2.000"
K1739	1214cc	3.518"/.020		4832P2	3517X	S572 \$13.95 (D738)		Exhaust Pocket Depth: -.167" Diameter: 2.000"



1200cc Buell XB12R Firebolt & XB12S Lightning • 3^{13/16}"

- Cases must be bored to accept big bore cylinders.
- Includes: Forged pistons, rings, retainer clips & chrome piston pins.
- Must use aftermarket big bore cylinders.
- The "XN" ring package is designed for "Nikasil" plated bores only.
- Head and base gasket kit available as a separate component.

(88 cu. in.) 10.5:1 Compression • Big Bore Kit • Reverse Dome

Wiseco Ring Package: Top Ring 1.5mm • 2nd Ring 1.5mm • Oil Ring 3.0mm

KIT PART NO. \$306.50 (D09381)	CC DISPL.	BORE	STROKE	REPL. PISTON \$153.25 (D5919)	REPL. RING SET \$27.95 (D7761)	REPL. RETAINER CLIP & PISTON PIN	GASKET KIT (Optional) \$65.29 (D7193)	DOME SPECIFICATION <i>Valve pocket dimensions are measured from Deck Height.</i>
K1735	1426cc	3.8125"/STD	3.812"	4830PS	38125XN	W5731 \$2.00 (D021) S572 \$13.95 (D738)	W6003	Dome Volume: -6.8cc
								Intake Pocket Depth: -.167" Diameter: 2.000"
								Exhaust Pocket Depth: -.167" Diameter: 2.000"

**1200cc Buell
XB12R Firebolt,
XB12S Lightning • 3^{13/16}"**



- Cases must be bored to accept big bore cylinders.
- Includes: Forged pistons, rings, retainer clips & chrome piston pins.
- Must use aftermarket big bore cylinders.
- The "XN" ring package is designed for "Nikasil" plated bores only.
- Head and base gasket kit available as a separate component.

(88 cu. in.) 14:1 Compression • Big Bore Kit • Domed • RACE ONLY

Wiseco Ring Package: Top Ring 1.5mm • 2nd Ring 1.5mm • Oil Ring 3.0mm

KIT PART NO. \$306.50 (D09381)	CC DISPL.	BORE	STROKE	REPL. PISTON \$153.25 (D5919)	REPL. RING SET \$27.95 (D7761)	REPL. RETAINER CLIP & PISTON PIN	GASKET KIT (Optional) \$65.29 (D7193)
K1736	1426cc	3.8125"/STD	3.812"	4831PS	38125XN	W5731 \$2.00 (D021) S572 \$13.95 (D738)	W6003

DOME SPECIFICATION <i>Valve pocket dimensions are measured from Deck Height.</i>	
Dome Volume:	+13.4cc
Intake Pocket	
Depth:	-.167"
Diameter:	2.000"
Exhaust Pocket	
Depth:	-.167"
Diameter:	2.000"



**1340 Shovelhead
1978-84 (80 cu. in.)**

- Includes: Forged pistons, rings, retainer clips & chrome piston pins.
- Complete top end gasket kit available as a separate component.

7:1 Compression • Domed

Hastings Ring Package: Top Ring .062" • 2nd Ring .062" • Oil Ring .158"

KIT PART NO. \$236.52 (D19141)	CC DISPL.	BORE	STROKE	REPL. PISTON \$118.26 (D6907)	REPL. RING SET \$27.95 (D7761)	REPL. RETAINER CLIP & PISTON PIN	GASKET KIT (Optional) \$107.00 (D0246)
K1613	1340cc	3.497"/STD	4.250"	4729PS	3497X	W5731	1978-84: W5916
K1614	1345cc	3.507"/.010		4729P1	3507X	\$2.00 (D021)	
K1615	1353cc	3.517"/.020		4729P2	3517X	S535	
K1616	1361cc	3.527"/.030		4729P3	3527X	\$13.95 (D738)	
K1617	1367cc	3.537"/.040		4729P4	3537X		

DOME SPECIFICATION <i>Valve pocket dimensions are measured from Deck Height.</i>	
Dome Volume:	+29.7cc
Intake Pocket	
Depth:	-.130"
Diameter:	2.000"
Exhaust Pocket	
Depth:	-.090"
Diameter:	1.870"

9.5:1 Compression • Domed

Hastings Ring Package: Top Ring .062" • 2nd Ring .062" • Oil Ring .158"

KIT PART NO. \$236.52 (D19141)	CC DISPL.	BORE	STROKE	REPL. PISTON \$118.26 (D6907)	REPL. RING SET \$27.95 (D7761)	REPL. RETAINER CLIP & PISTON PIN	GASKET KIT (Optional) \$107.00 (D0246)
K1623	1340cc	3.497"/STD	4.250"	4730PS	3497X	W5731	1978-84: W5916
K1624	1345cc	3.507"/.010		4730P1	3507X	\$2.00 (D021)	
K1625	1353cc	3.517"/.020		4730P2	3517X	S535	
K1626	1361cc	3.527"/.030		4730P3	3527X	\$13.95 (D738)	
K1627	1367cc	3.537"/.040		4730P4	3537X		

DOME SPECIFICATION <i>Valve pocket dimensions are measured from Deck Height.</i>	
Dome Volume:	+56.0cc
Intake Pocket	
Depth:	-.115"
Diameter:	2.000"
Exhaust Pocket	
Depth:	-.085"
Diameter:	1.870"



1340 Evo Big Twin 1984-99 (80 cu. in.)

- Will fit Screamin' Eagle cylinder head 9.5:1 compression.
- Includes: Forged pistons, rings, retainer clips & chrome piston pins.
- Complete top end gasket kit available as a separate component.



8.5:1 Compression • Flat Top

Hastings Ring Package: Top Ring .062" • 2nd Ring .062" • Oil Ring .158"

KIT PART NO. \$252.22 (D31351)	CC DISPL.	BORE	STROKE	REPL. PISTON \$127.61 (D7567)	REPL. RING SET \$27.95 (D7761)	REPL. RETAINER CLIP & PISTON PIN	GASKET KIT (Optional) \$113.53 (D2186)
K1640	1340cc	3.498"/STD	4.250"	4722PS	3497X	W5731	1984-91: W5914
K1641	1345cc	3.508"/.010		4722P1	3507X	\$2.00 (D021)	1992-99: W5917
K1642	1353cc	3.518"/.020		4722P2	3517X		
K1643	1361cc	3.528"/.030		4722P3	3527X	S534	
K1644	1369cc	3.538"/.040		4722P4	3537X	\$13.95 (D738)	

DOMESPECIFICATION
Valve pocket dimensions are measured from Deck Height.

Dome Volume: -1.5cc
Intake Pocket
Depth: -.178"
Diameter: 2.000"
Exhaust Pocket
Depth: -.178"
Diameter: 2.000"



1340 Evo Big Twin 1984-99 (80 cu. in.)

- Includes: Forged pistons, rings, retainer clips & chrome piston pins.
- Complete top end gasket kit available as a separate component.

10:1 Compression • Domed

Hastings Ring Package: Top Ring .062" • 2nd Ring .062" • Oil Ring .158"

KIT PART NO. \$272.54 (D25361)	CC DISPL.	BORE	STROKE	REPL. PISTON \$129.78 (D6718)	REPL. RING SET \$27.95 (D7761)	REPL. RETAINER CLIP & PISTON PIN	GASKET KIT (Optional) \$113.53 (D2186)
K1665	1340cc	3.498"/STD	4.250"	Fnt: 4724PS Rear: 4725PS	3497X	W5731	1984-91: W5914
K1675	1342cc	3.503"/.005		Fnt: 4724P05 Rear: 4725P05	3504X	\$2.00 (D021)	1992-99: W5917
K1666	1345cc	3.508"/.010		Fnt: 4724P1 Rear: 4725P1	3507X		
K1667	1353cc	3.518"/.020		Fnt: 4724P2 Rear: 4725P2	3517X	S534	
K1668	1361cc	3.528"/.030		Fnt: 4724P3 Rear: 4725P3	3527X	\$13.95 (D738)	
K1669	1369cc	3.538"/.040		Fnt: 4724P4 Rear: 4725P4	3537X		

DOMESPECIFICATION
Valve pocket dimensions are measured from Deck Height.

Dome Volume: +12.9cc
Intake Pocket
Depth: -.143"
Diameter: 2.080"
Exhaust Pocket
Depth: -.138"
Diameter: 1.740"

11:1 Compression • Domed

Hastings Ring Package: Top Ring .062" • 2nd Ring .062" • Oil Ring .158"

KIT PART NO. \$272.54 (D25361)	CC DISPL.	BORE	STROKE	REPL. PISTON \$129.78 (D6718)	REPL. RING SET \$27.95 (D7761)	REPL. RETAINER CLIP & PISTON PIN	GASKET KIT (Optional) \$113.53 (D2186)
K1690	1340cc	3.498"/STD	4.250"	Fnt: 4726PS Rear: 4727PS	3497X	W5731	1984-91: W5914
K1691	1342cc	3.503"/.005		Fnt: 4726P05 Rear: 4727P05	3504X	\$2.00 (D021)	1992-99: W5917
K1692	1345cc	3.508"/.010		Fnt: 4726P1 Rear: 4727P1	3507X		
K1693	1353cc	3.518"/.020		Fnt: 4726P2 Rear: 4727P2	3517X	S534	
K1694	1361cc	3.528"/.030		Fnt: 4726P3 Rear: 4727P3	3527X	\$13.95 (D738)	
K1695	1369cc	3.538"/.040		Fnt: 4726P4 Rear: 4727P4	3537X		

DOMESPECIFICATION
Valve pocket dimensions are measured from Deck Height.

Dome Volume: +19.0cc
Intake Pocket
Depth: -.165"
Diameter: 2.080"
Exhaust Pocket
Depth: -.165"
Diameter: 1.740"

1340 Evo Big Twin 1984-99 for Screamin' Eagle Cylinder Head (80 cu. in.)



- Includes: Forged pistons, rings, retainer clips & chrome piston pins.
- Complete top end gasket kit available as a separate component.

10.5:1 Compression • Domed

Hastings Ring Package: Top Ring .062" • 2nd Ring .062" • Oil Ring .158"

KIT PART NO. \$272.54 (D25361)	CC DISPL.	BORE	STROKE	REPL. PISTON \$136.27 (D6718)	REPL. RING SET \$27.95 (D7761)	REPL. RETAINER CLIP & PISTON PIN	GASKET KIT (Optional) \$113.53 (D2186)
K1714	1342cc	3.503"/.005	4.250"	Front: 4778P05 Rear: 4779P05	3504X	W5731	1984-91: W5914
K1715	1345cc	3.508"/.010		Front: 4778P1 Rear: 4779P1	3507X	\$2.00 (D021)	1992-99: W5917
K1716	1353cc	3.518"/.020		Front: 4778P2 Rear: 4779P2	3517X	S534 \$13.95 (D738)	

DOMESPECIFICATION
Valve pocket dimensions are measured from Deck Height.

Dome Volume:	+6.5cc
Intake Pocket	
Depth:	-.165"
Diameter:	2.080"
Exhaust Pocket	
Depth:	-.165"
Diameter:	1.740"



1340 Evo 3^{5/8}" Big Bore Kit Stock Stroke 1984-99 (88 cu. in.)

- Must use aftermarket engine case on 1990-95 models only.
- Cases must be bored to accept big bore cylinders.
- Must use big bore aftermarket cylinder liners.
- Includes: Forged pistons, rings, retainer clips & chrome piston pins.
- Complete top end gasket kit available as a separate component.

9.25:1 Compression • Flat Top

Hastings Ring Package: Top Ring .062" • 2nd Ring .062" • Oil Ring .158"

KIT PART NO. \$290.35 (D12471)	CC DISPL.	BORE	STROKE	REPL. PISTON \$145.18 (D1178)	REPL. RING SET \$27.95 (D7761)	REPL. RETAINER CLIP & PISTON PIN	GASKET KIT (Optional) \$110.14 (D8066)
K1750	1438cc	3.625"/STD	4.250"	4594PS	3625X	W5731 \$2.00 (D021) S534 \$13.95 (D738)	1984-91: W6382 1992-99: W6381

DOMESPECIFICATION
Valve pocket dimensions are measured from Deck Height.

Dome Volume:	-2.0cc
Intake Pocket	
Depth:	-.202"
Diameter:	2.120"
Exhaust Pocket	
Depth:	-.202"
Diameter:	2.120"



1340 Evo 3^{3/4}" Big Bore Kit Stock Stroke 1984-99 (93.4 cu. in.)

"SLEEPER SERIES"

Converts your stock cylinder into a Big Bore

Must use aftermarket engine case on 1990-95 models only

- Cases must be bored to accept big bore sleeves (3035FA).
- Includes: Forged pistons, rings, retainer clips & chrome piston pins.
- Complete top end gasket kit available as a separate component.



9.5:1 Compression • Flat Top

Wiseco Ring Package: Top Ring .047" • 2nd Ring .057" • Oil Ring .158"

KIT PART NO. \$292.31 (D93571)	CC DISPL.	BORE	STROKE	REPL. PISTON \$146.16 (D9678)	REPL. RING SET \$27.95 (D7761)	REPL. RETAINER CLIP & PISTON PIN	GASKET KIT (Optional) \$110.14 (D8066)
K1749	1530cc	3.740"/STD	4.250"	4661PS	3740XH	W5731 \$2.00 (D021) S572 \$13.95 (D738)	1984-91: W6380 1992-99: W6379

DOME SPECIFICATION <i>Valve pocket dimensions are measured from Deck Height.</i>	
Dome Volume:	+9.5cc
Intake Pocket	
Depth:	-.189"
Diameter:	2.000"
Exhaust Pocket	
Depth:	-.189"
Diameter:	2.000"

1340 Big Bore Sleeves

Wiseco Part No: **3035FA** \$106.01 (D1636)



Twin Cam 88 1999-06 (88 cu. in.) Hi-Compression Standard Bore Kits

- Screamin' Eagle ignition module required.
- Includes: Forged pistons, rings, retainer clips & chrome piston pins.
- Complete top end gasket kit available as a separate component.
- Skirt coated.

10.5:1 Compression • Domed

Wiseco Ring Package: Top Ring 1.5mm • 2nd Ring 1.5mm • Oil Ring 3.0mm

KIT PART NO. \$294.64 (D79671)	CC DISPL.	BORE	STROKE	REPL. PISTON \$147.32 (D9388)	REPL. RING SET \$27.95 (D7761)	REPL. RETAINER CLIP & PISTON PIN	GASKET KIT (Optional) \$119.18 (D1517)
K1726	1448cc	3.750"/STD	4.000"	4756PS	3750XP	W5752	W6004
K1728	1456cc	3.760"/.010		4756P1	3760XP	\$2.00 (D021)	
K1729	1463cc	3.770"/.020		4756P2	3770XP	S594	
K1730	1471cc	3.780"/.030		4756P3	3780XP	\$13.95 (D738)	

DOME SPECIFICATION <i>Valve pocket dimensions are measured from Deck Height.</i>	
Dome Volume:	+19.5cc
Intake Pocket	
Depth:	-.150"
Diameter:	2.000"
Exhaust Pocket	
Depth:	-.150"
Diameter:	2.000"

Twin Cam 88 1999-06 1550cc Big Bore Kits (95 cu. in.)



- Ignition module change not required.
- Cylinder boring required.
- Includes: Forged pistons, rings, retainer clips, chrome piston pins & complete top end gasket kit.
- Skirt coated.

9:1 Compression • Flat Top

Hastings Ring Package: Top Ring .059" • 2nd Ring .059" • Oil Ring .098"

KIT PART NO. \$410.26 (D61642)	CC DISPL.	BORE	STROKE	REPL. PISTON \$147.32 (D9388)	REPL. RING SET \$24.95 (D7941)	REPL. RETAINER CLIP & PISTON PIN	GASKET KIT \$115.63 (D8396)
K1719	1546cc	3.875"/STD	4.000"	4688PS	3875XK	W5752	W5786
K1720	1550cc	3.880"/.005		4688P05	3880XK	\$2.00 (D021)	
K1721	1554cc	3.885"/.010		4688P1	3885XK	S594	
K1722	1562cc	3.895"/.020		4688P2	3895XK	\$13.95 (D738)	

DOMESPECIFICATION
Valve pocket dimensions are measured from Deck Height.

Dome Volume:	-2.0cc
Intake Pocket	
Depth:	-.161"
Diameter:	2.000"
Exhaust Pocket	
Depth:	-.158"
Diameter:	2.000"



Twin Cam 88 1999-06 1550cc Big Bore Kits (95 cu. in.)

- Screamin' Eagle ignition module required.
- Cylinder boring required.
- Includes: Forged pistons, rings, retainer clips, chrome piston pins & complete top end gasket kit.
- Skirt coated.

10.5:1 Compression • Domed

Hastings Ring Package: Top Ring .059" • 2nd Ring .059" • Oil Ring .098"

KIT PART NO. \$410.26 (D61642)	CC DISPL.	BORE	STROKE	REPL. PISTON \$147.32 (D9388)	REPL. RING SET \$24.95 (D7941)	REPL. RETAINER CLIP & PISTON PIN	GASKET KIT \$115.63 (D8396)
K1709	1546cc	3.875"/STD	4.000"	4678PS	3875XK	W5752	W5786
K1710	1550cc	3.880"/.005		4678P05	3880XK	\$2.00 (D021)	
K1711	1554cc	3.885"/.010		4678P1	3885XK		
K1712	1562cc	3.895"/.020		4678P2	3895XK	S594	
K1713	1570cc	3.905"/.030		4678P3	3905XK	\$13.95 (D738)	

DOMESPECIFICATION
Valve pocket dimensions are measured from Deck Height.

Dome Volume:	+15.0cc
Intake Pocket	
Depth:	-.161"
Diameter:	2.000"
Exhaust Pocket	
Depth:	-.158"
Diameter:	2.000"



Twin Cam 88 1999-06 1650cc Big Bore Kit (100 cu. in.)

"SLEEPER SERIES"

Converts your stock cylinder into a Big Bore

- Screamin' Eagle ignition module required.
- Big bore cylinder or cylinder resleeving required.
- Cases must be bored to accept big bore cylinder.
- Includes: Forged pistons, rings, retainer clips, chrome piston pins & complete Top End gasket kit.



10:1 Compression • Domed • Skirt Coated

Hastings Ring Package: Top Ring .047" • 2nd Ring .047" • Oil Ring .118"

KIT PART NO. \$361.46 (D88612)	CC DISPL.	BORE	STROKE	REPL. PISTON \$149.84 (D0998)	REPL. RING SET \$38.59 (D4822)	REPL. RETAINER CLIP & PISTON PIN \$2.00 (D021) \$13.95 (D738)	GASKET KIT \$66.10 (D6693)
K1744	1650cc	4.000"/STD	4.000"	4845PS	4000GF	W5752 S594	W6274

DOME SPECIFICATION <i>Valve pocket dimensions are measured from Deck Height.</i>	
Dome Volume:	+5.6cc
Intake Pocket	
Depth:	-.183"
Diameter:	2.000"
Exhaust Pocket	
Depth:	-.183"
Diameter:	2.000"

Twin Cam 88 Big Bore Sleeves
Wiseco Part No: **3209FA** \$106.01 (D1636)

NEW!

Twin Cam 88 1999-06 1650cc Big Bore Kit (100 cu. in.)

"SLEEPER SERIES"

Converts your stock cylinder into a Big Bore



- Screamin' Eagle ignition module required.
- Big bore cylinders or resleeving required.
- Cases must be bored to accept big bore cylinders.
- Includes: Forged pistons, rings, retainer clips & chrome piston pins.
- Gasket available as a separate component.

10.5:1 Compression • Domed • Skirt Coated

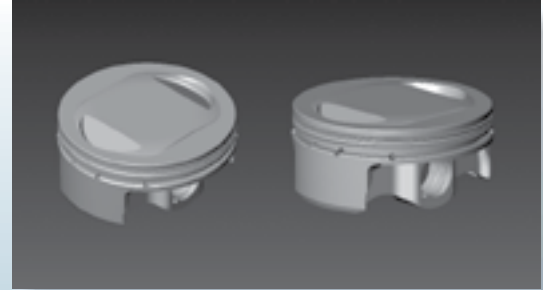
Hastings Ring Package: Top Ring .0472" • 2nd Ring .0472" • Oil Ring .118"

KIT PART NO. \$299.68 (D08971)	CC DISPL.	BORE	STROKE	REPL. PISTON	REPL. RING SET \$38.59 (D4822)	REPL. RETAINER CLIP & PISTON PIN \$2.00 (D021) \$13.95 (D738)	GASKET KIT (Optional) \$66.10 (D6693)
TBA	1650cc	4.000"/STD	4.000"	TBA	4000GF	W5752 S594	W6274

DOME SPECIFICATION <i>Valve pocket dimensions are measured from Deck Height.</i>	
Dome Volume:	TBA
Intake Pocket	
Depth:	-.183"
Diameter:	2.000"
Exhaust Pocket	
Depth:	-.183"
Diameter:	2.000"

Twin Cam 88 Big Bore Sleeves
Wiseco Part No: **3209FA** \$106.01 (D1636)

NEW! Twin Cam 88 1999-06
1752cc Big Bore Kit (107 cu. in.)



- Screamin' Eagle ignition module required.
- Big bore cylinders required.
- Cases must be bored to accept big bore cylinders.
- Includes: Forged pistons, rings, retainer clips & chrome piston pins.
- Gasket available as a separate component.
- Skirt coated.

10.5:1 Compression • Domed

Hastings Ring Package: Top Ring .0472" • 2nd Ring .0472" • Oil Ring .118"

KIT PART NO. \$299.68 (D08971)	CC DISPL.	BORE	STROKE	REPL. PISTON \$149.84 (D0998)	REPL. RING SET \$38.59 (D4822)	REPL. RETAINER CLIP & PISTON PIN	GASKET KIT (Optional)
K1759	1752cc	4.125"/STD	4.000"	4923PS	4127GF	W5752 \$2.00 (D021) S594 \$13.95 (D738)	TBA

DOME SPECIFICATION <i>Valve pocket dimensions are measured from Deck Height.</i>	
Dome Volume:	-3.7cc
Intake Pocket	
Depth:	-.183"
Diameter:	2.000"
Exhaust Pocket	
Depth:	-.183"
Diameter:	2.000"



Twin Cam 88 1999-06
1802cc Big Bore Kit
4 3/8" Stroker (110 cu. in.)

"SLEEPER SERIES"
Converts your stock cylinder into a Big Bore

- Screamin' Eagle ignition module required.
- Big bore cylinder or sleeving required.
- Cases must be bored to accept big bore cylinders.
- Includes: Forged pistons, rings, retainer clips & chrome piston pins.
- Gasket available as a separate component.

10:1 Compression • Reverse Dome • Skirt Coated

Hastings Ring Package: Top Ring .0472" • 2nd Ring .0472" • Oil Ring .118"

KIT PART NO. \$299.68 (D08971)	CC DISPL.	BORE	STROKE	REPL. PISTON \$149.84 (D0998)	REPL. RING SET \$38.59 (D4822)	REPL. RETAINER CLIP & PISTON PIN	GASKET KIT (Optional) \$66.10 (D6693)
K1745	1802cc	4.000"/STD	4.375"	4871PS	4000GF	W5752 \$2.00 (D021) S594 \$13.95 (D738)	W6274

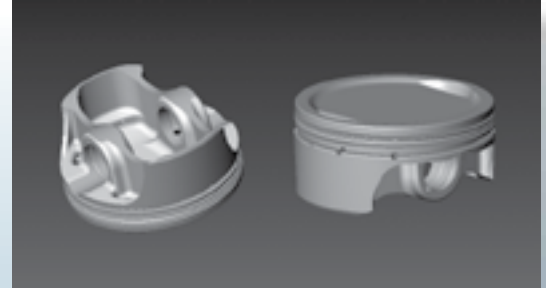
DOME SPECIFICATION <i>Valve pocket dimensions are measured from Deck Height.</i>	
Dome Volume:	-7.0cc
Intake Pocket	
Depth:	-.213"
Diameter:	2.150"
Exhaust Pocket	
Depth:	-.213"
Diameter:	2.150"

Twin Cam 88 Big Bore Sleeves
Wiseco Part No: **3209FA** \$106.01 (D1636)



NEW! Twin Cam 96 2007 1691cc Big Bore Kit (103 cu. in.)

(Also fits Twin Cam 88 1999-06 with 4 3/8" Stroker Crank)



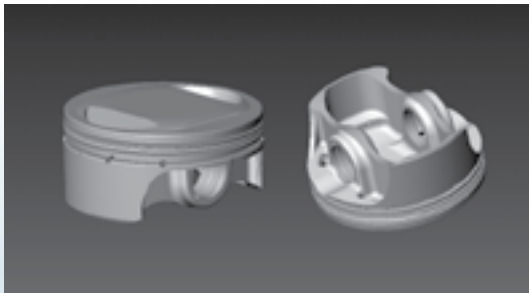
- Recalibration required.
- Cylinder boring required.
- Includes: Forged pistons, rings, retainer clips & chrome piston pins.
- Gasket available as a separate component.
- Skirt coated.

9:1 Compression • Reverse Dome

Hastings Ring Package: Top Ring .0472" • 2nd Ring .0472" • Oil Ring .118"

KIT PART NO. \$299.68 (D08971)	CC DISPL.	BORE	STROKE	REPL. PISTON \$149.84 (D0998)	REPL. RING SET \$27.95 (D7761)	REPL. RETAINER CLIP & PISTON PIN	GASKET KIT (Optional) \$115.63 (D8396)
K1751	1691cc	3.875"/STD		4916PS	3875XK	W5752	W5786
K1752	1695cc	3.880"/.005	4.375"	4916P005	3880XK	\$2.00 (D021)	
K1753	1700cc	3.885"/.010		4916P1	3885XK	S594 \$13.95 (D738)	

DOME SPECIFICATION	
<i>Valve pocket dimensions are measured from Deck Height.</i>	
Dome Volume:	-11.0cc
Intake Pocket	
Depth:	-.213"
Diameter:	2.150"
Exhaust Pocket	
Depth:	-.213"
Diameter:	2.150"



NEW!

Twin Cam 96 2007 1691cc Big Bore Kit (103 cu. in.)

(Also fits Twin Cam 88 1999-06 with 4 3/8" Stroker Crank)

- Recalibration required.
- Cylinder boring required.
- Includes: Forged pistons, rings, retainer clips & chrome piston pins.
- Gasket available as a separate component.
- Skirt coated.

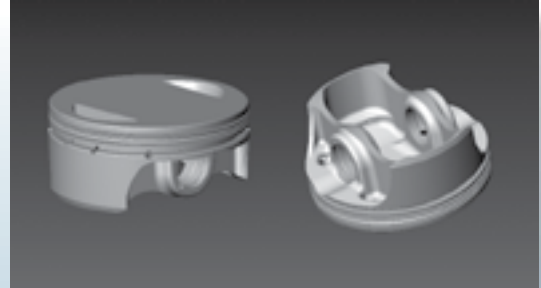
10.5:1 Compression • Reverse Dome

Hastings Ring Package: Top Ring .0472" • 2nd Ring .0472" • Oil Ring .118"

KIT PART NO. \$299.68 (D08971)	CC DISPL.	BORE	STROKE	REPL. PISTON \$149.84 (D0998)	REPL. RING SET \$27.95 (D7761)	REPL. RETAINER CLIP & PISTON PIN	GASKET KIT (Optional) \$115.63 (D8396)
K1754	1691cc	3.875"/STD		4917PS	3875XK	W5752	W5786
K1755	1695cc	3.880"/.005	4.375"	4917P005	3880XK	\$2.00 (D021)	
K1756	1700cc	3.885"/.010		4917P5	3885XK	S594 \$13.95 (D738)	

DOME SPECIFICATION	
<i>Valve pocket dimensions are measured from Deck Height.</i>	
Dome Volume:	-5.5cc
Intake Pocket	
Depth:	-.213"
Diameter:	2.150"
Exhaust Pocket	
Depth:	-.213"
Diameter:	2.150"

NEW! Twin Cam 96 2007
1802cc Big Bore Kit (110 cu. in.)
(Also fits Twin Cam 88 1999-06 with 4 3/8" Stroker Crank)



- Recalibration required.
- Big bore cylinders and case boring required.
- Includes: Forged pistons, rings, retainer clips & chrome piston pins.
- Gasket available as a separate component.
- Skirt coated.

10.5:1 Compression • Reverse Dome

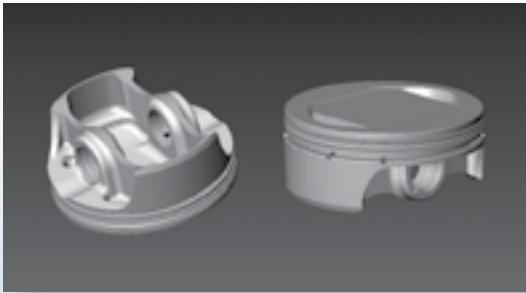
Hastings Ring Package: Top Ring .0472" • 2nd Ring .0472" • Oil Ring .118"

KIT PART NO. \$299.68 (D18971)	CC DISPL.	BORE	STROKE	REPL. PISTON \$149.84 (D0998)	REPL. RING SET \$38.59 (D4822)	REPL. RETAINER CLIP & PISTON PIN	GASKET KIT (Optional) \$66.10 (D6693)
K1757	1802cc	4.000"	4.375"	4918PS	4000GF	W5752 \$2.00 (D021) S594 \$13.95 (D738)	W6274

DOMESPECIFICATION
Valve pocket dimensions are measured from Deck Height.

Dome Volume: - 2.3cc
Intake Pocket
Depth: -.213"
Diameter: 2.150"
Exhaust Pocket
Depth: -.213"
Diameter: 2.150"

NEW! Twin Cam 96 2007
1971cc Big Bore Kit (117 cu. in.)
(Also fits Twin Cam 88 1999-06 with 4 3/8" Stroker Crank)



- Recalibration required.
- Big bore cylinders and case boring required.
- Includes: Forged pistons, rings, retainer clips & chrome piston pins.
- Gasket available as a separate component.
- Skirt coated.

10.5:1 Compression • Reverse Dome

Hastings Ring Package: Top Ring .0472" • 2nd Ring .0472" • Oil Ring .118"

KIT PART NO. \$299.68 (D08971)	CC DISPL.	BORE	STROKE	REPL. PISTON \$149.84 (D0998)	REPL. RING SET \$38.59 (D4822)	REPL. RETAINER CLIP & PISTON PIN	GASKET KIT (Optional)
K1758	1917cc	4.125"	4.375"	4919PS	4127GF	W5752 \$2.00 (D021) S594 \$13.95 (D738)	TBA

DOMESPECIFICATION
Valve pocket dimensions are measured from Deck Height.

Dome Volume: -5.0cc
Intake Pocket
Depth: -.213"
Diameter: 2.150"
Exhaust Pocket
Depth: -.213"
Diameter: 2.150"



V-Rod (VRSCA) 2001-07 1130 to 1320cc Big Bore Kit (80 cu. in.)

- Cases must be bored to accept big bore sleeve part number (3444FAH).
- Case machining available at Wiseco (HDC60).
- Kit Includes: Forged pistons, rings, retainer clips, piston pins, head gaskets, O-rings & sleeves.
- O-Rings available as a separate component (W6165).
- Carrillo Rods available from Wiseco, as a separate component (CAR007).
- High compression head gasket kit (W6192) increases compression by 1/2 point.



12:1 Compression • Reverse Dome

Wiseco Ring Package: Top Ring .043mm • Oil Ring 2.0mm

KIT PART NO. \$1316.91 (D41097)	CC DISPL.	BORE	STROKE	REPL. PISTON \$264.60 (D67851)	REPL. RING SET \$55.08 (D5033)	REPL. RETAINER CLIP & PISTON PIN	GASKET KIT (Optional) \$105.57 (D4336)
CK139	1320cc	4.250"/STD	2.835"	Front 4792M10795 Rear 4793M10795	4250ZB	W5590 \$3.63 (D342) S619 \$13.95 (D738)	W6022

DOMESPECIFICATION
Valve pocket dimensions are measured from Deck Height.

Dome Volume: -14.2cc
Intake Pocket
Depth: -.225"
Diameter: 1.780"
Exhaust Pocket
Depth: -.195"
Diameter: 1.540"

14:1 Compression • Flat Top • RACE ONLY

Wiseco Ring Package: Top Ring .043" • Oil Ring 2.0mm

KIT PART NO.	CC DISPL.	BORE	STROKE	REPL. PISTON \$264.60 (D67851)	REPL. RING SET \$55.08 (D5033)	REPL. RETAINER CLIP & PISTON PIN	GASKET KIT (Optional) \$105.57 (D4336)
Individual Piston Only	1320cc	4.250"/STD	2.835"	Front 9891M10795 Rear 9892M10795	4250ZB	W5590 \$3.63 (D342) S619 \$13.95 (D738)	W6022

DOMESPECIFICATION
Valve pocket dimensions are measured from Deck Height.

Dome Volume: -7.3cc
Intake Pocket
Depth: -.195"
Diameter: 1.780"
Exhaust Pocket
Depth: -.165"
Diameter: 1.540"



Designed
in conjunction with Wiseco
for the V-Rod

Carrillo Rods

Wiseco Part No: **CAR007**
\$524.00 (D00244)

Replacement Sleeve

Wiseco Part No: **3444FAH** \$305.00 (D05312)

O-Ring Kit

Wiseco Part No: **W6165** \$8.53 (D215)



**V-Rod (VRSCA) 2001-07
Big Bore +1/4" Stroker Kits
(87.5 cu. in.)**



- Cases must be bored to accept big bore sleeve part number (3444FAH).
- Case machining available at Wiseco (HDC60).
- O-Rings available as a separate component (W6165).
- Carrillo Rods available from Wiseco, as a separate component (CAR007).
- High compression head gasket kit (W6192) increases compression by 1/2 point.

14:1 Compression +1/4" Stroker • Reverse Dome • RACE ONLY

Wiseco Ring Package: Top Ring .043" • Oil Ring 2.0mm

KIT PART NO.	CC DISPL.	BORE	STROKE	REPL. PISTON \$264.60 (D67851)	REPL. RING SET \$55.08 (D5033)	REPL. RETAINER CLIP & PISTON PIN	GASKET KIT (Optional) \$105.57 (D4336)
Individual Piston Only	1434cc	4.250"/STD	3.085"	Front 10055M10795 Rear 10056M10795	4250ZB	W5590 \$3.63 (D342) S619 \$13.95 (D738)	W6022

DOMESPECIFICATION
Valve pocket dimensions are measured from Deck Height.

Dome Volume: -11.5cc
Intake Pocket
Depth: -.195"
Diameter: 1.780"
Exhaust Pocket
Depth: -.165"
Diameter: 1.540"

15:1 Compression +1/4" Stroker • Reverse Dome • RACE ONLY

Wiseco Ring Package: Top Ring .043" • Oil Ring 2.0mm

KIT PART NO.	CC DISPL.	BORE	STROKE	REPL. PISTON \$264.60 (D67851)	REPL. RING SET \$55.08 (D5033)	REPL. RETAINER CLIP & PISTON PIN	GASKET KIT (Optional) \$105.57 (D4336)
Individual Piston Only	1434cc	4.250"/STD	3.085"	Front 10052M10795 Rear 10053M10795	4250ZB	W5590 \$3.63 (D342) S619 \$13.95 (D738)	W6022

DOMESPECIFICATION
Valve pocket dimensions are measured from Deck Height.

Dome Volume: -7.3cc
Intake Pocket
Depth: -.195"
Diameter: 1.780"
Exhaust Pocket
Depth: -.165"
Diameter: 1.540"





V-Rod +1/2" Stroker 2001-07 Big Bore Kit (95 cu. in.)

- Cases must be bored to accept big bore sleeve part number (3444FAH).
- Case machining available at Wiseco (HDC60).
- O-Rings available as a separate component (W6165).
- Carrillo Rods available from Wiseco, as a separate component (CAR007).
- High compression head gasket kit (W6192) increases compression by 1/2 point.



12:1 Comp. +1/2" Stroker • Rev. Dome • RACE ONLY Extensive Case Machining Required

Wiseco Ring Package: Top Ring .043" • Oil Ring 2.0mm

KIT PART NO.	CC DISPL.	BORE	STROKE	REPL. PISTON \$264.60 (D67851)	REPL. RING SET \$55.08 (D5033)	REPL. RETAINER CLIP & PISTON PIN	GASKET KIT (Optional) \$105.57 (D4336)
Individual Piston Only	1550cc	4.250"/STD	3.331"	Front 10165M10795 Rear 10166M10795	4250ZB	W5590 \$3.63 (D342) S619 \$13.95 (D738)	W6022

DOMESPECIFICATION
Valve pocket dimensions are measured from Deck Height.

Dome Volume: -22.5cc
Intake Pocket
Depth: -.235"
Diameter: 1.780"
Exhaust Pocket
Depth: -.205"
Diameter: 1.540"

14:1 Comp. +1/2" Stroker • Rev. Dome • RACE ONLY Extensive Case Machining Required

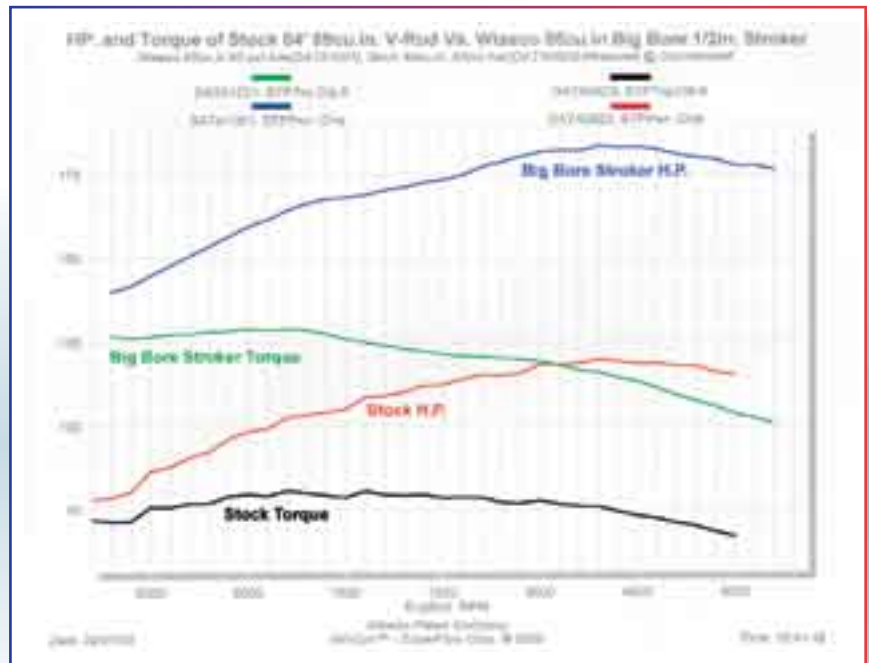
Wiseco Ring Package: Top Ring .043" • Oil Ring 2.0mm

KIT PART NO.	CC DISPL.	BORE	STROKE	REPL. PISTON \$264.60 (D67851)	REPL. RING SET \$55.08 (D5033)	REPL. RETAINER CLIP & PISTON PIN	GASKET KIT (Optional) \$105.57 (D4336)
Individual Piston Only	1550cc	4.250"/STD	3.331"	Front 10167M10795 Rear 10168M10795	4250ZB	W5590 \$3.63 (D342) S619 \$13.95 (D738)	W6022

DOMESPECIFICATION
Valve pocket dimensions are measured from Deck Height.

Dome Volume: -16.0cc
Intake Pocket
Depth: -.235"
Diameter: 1.780"
Exhaust Pocket
Depth: -.205"
Diameter: 1.540"

**Over 180HP
on
pump gas!**



NEW! Honda - VTX 1800
2002-06



- Cylinder deglazing required for CK146.
- Resleeving required for CK136 (W6040).
- Includes: Forged pistons, rings, retainer clips, piston pins, head & base gaskets.

10.5:1 Compression

KIT PART NO. \$441.21 (D37462) \$435.80 (D84162)	CC DISPL.	BORE	STROKE	REPL. PISTON \$152.41 (D4419)	REPL. RING SET \$38.59 (D4171)	REPL. RETAINER CLIP & PISTON PIN	GASKET KIT (Optional)
CK146	1795cc	101.00mm	112mm	4800M10100	10100XS	W6045	W6166
CK136	1934cc	104.77mm		4775M10477	4127GF	\$5.36 (D123) S657 \$11.88 (D929)	\$136.39 (D4818)

DOMESPECIFICATION
Valve pocket dimensions are measured from Deck Height.

Dome Volume: -11.8cc

Intake Pocket
Depth: -.075"
Diameter: 1.900"

Exhaust Pocket
Depth: -.075"
Diameter: 1.900"



NEW! Yamaha
Royal Star Venture •
Custom Midnight Star 1996-99

- Cylinder boring only.
- Includes: Forged pistons, ring sets, piston pins, reatiner clips & spring steel head gaskets.

10.5:1 Compression

Ring Package: Top Ring 1mm • 2nd Ring 1mm • Oil Ring 2mm

KIT PART NO. \$626.68 (D10673)	CC DISPL.	BORE	STROKE	REPL. PISTON \$137.37 (D2428)	REPL. RING SET \$27.95 (D7761)	REPL. RETAINER CLIP & PISTON PIN	GASKET KIT (Optional)
CK103	1394cc	82mm	65.98mm	4685M08200	3228XG	CW19 \$2.00 (D021) S376 \$13.60 (D618)	W5785 \$77.20 (D2364)

DOMESPECIFICATION
Valve pocket dimensions are measured from Deck Height.

Dome Volume: -8.6cc

Intake Pocket
Depth: -.065"
Diameter: 1.340"

Exhaust Pocket
Depth: -.130"
Diameter: 1.140"



NEW! Yamaha - Road Star 1999-03

- CK177 requires cylinder deglazing.
- CK178 & CK179 require cylinder boring and replating, or resleeving.
- Includes: Forged pistons, ring sets, piston pins & retainer clips.
- Skirt coated.



10.5:1 Compression

Ring Package: Top Ring 1.2mm • 2nd Ring 1.5mm • Oil Ring 3mm

KIT PART NO. \$319.68 (D18191)	CC DISPL.	BORE	STROKE	REPL. PISTON \$159.84 (D0959)	REPL. RING SET \$34.95 (D7902)	REPL. RETAINER CLIP & PISTON PIN	GASKET KIT (Optional) \$61.79 (D8073)
CK177	1602cc	95mm	113mm	Fnt: 4878M09500 Rear: 4879M09500	9500XY	W5590 \$3.63 (D342) S655 \$13.60 (D618)	W6367

DOME SPECIFICATION	
<i>Valve pocket dimensions are measured from Deck Height.</i>	
Dome Volume:	+22cc
Intake Pocket	
Depth:	-.120"
Diameter:	1.600"
Exhaust Pocket	
Depth:	-.120"
Diameter:	1.360"

10.5:1 Compression

Ring Package: Top Ring 1.2mm • 2nd Ring 1.5mm • Oil Ring 3mm

KIT PART NO. \$319.68 (D18191)	CC DISPL.	BORE	STROKE	REPL. PISTON \$159.84 (D0959)	REPL. RING SET \$27.95 (D7761)	REPL. RETAINER CLIP & PISTON PIN	GASKET KIT (Optional) \$57.75 (D5643)
CK178	1670cc	97mm	113mm	Fnt: 4878M09700 Rear: 4879M09700	9700VA	W5590 \$3.63 (D342) S655 \$13.60 (D618)	W6368

DOME SPECIFICATION	
<i>Valve pocket dimensions are measured from Deck Height.</i>	
Dome Volume:	+19.8cc
Intake Pocket	
Depth:	-.120"
Diameter:	1.600"
Exhaust Pocket	
Depth:	-.120"
Diameter:	1.360"

10.5:1 Compression

Ring Package: Top Ring 1.2mm • 2nd Ring 1.5mm • Oil Ring 3mm

KIT PART NO. \$319.68 (D18191)	CC DISPL.	BORE	STROKE	REPL. PISTON \$159.84 (D0959)	REPL. RING SET \$34.95 (D7902)	REPL. RETAINER CLIP & PISTON PIN	GASKET KIT (Optional) \$57.75 (D5643)
CK179	1775cc	100mm	113mm	Fnt: 4878M01000 Rear: 4879M01000	1000XY	W5590 \$3.63 (D342) S655 \$13.60 (D618)	W6369

DOME SPECIFICATION	
<i>Valve pocket dimensions are measured from Deck Height.</i>	
Dome Volume:	+13.5cc
Intake Pocket	
Depth:	-.120"
Diameter:	1.600"
Exhaust Pocket	
Depth:	-.120"
Diameter:	1.360"

NEW! Road Star 2004-07
Road Star Warrior 2002-07



- CK178 requires cylinder deglazing.
- CK179 requires cylinder boring and replating, or resleeving.
- Includes: Forged pistons, ring sets, piston pins & retainer clips.
- Skirt coated.

10.5:1 Compression

Ring Package: Top Ring 1.2mm • 2nd Ring 1.5mm • Oil Ring 3mm

KIT PART NO. \$319.68 (D18191)	CC DISPL.	BORE	STROKE	REPL. PISTON \$159.84 (D0959)	REPL. RING SET \$27.95 (D7761)	REPL. RETAINER CLIP & PISTON PIN	GASKET KIT (Optional) \$57.75 (D5643)
CK178	1670cc	97mm	113mm	Fnt: 4878M09700 Rear: 4879M09700	9700VA	W5590 \$3.63 (D342) S655 \$13.60 (D618)	W6368

DOMESPECIFICATION
Valve pocket dimensions are measured from Deck Height.

Dome Volume: +19.8cc
Intake Pocket
Depth: -.120"
Diameter: 1.600"
Exhaust Pocket
Depth: -.120"
Diameter: 1.360"

10.5:1 Compression

Ring Package: Top Ring 1.2mm • 2nd Ring 1.5mm • Oil Ring 3mm

KIT PART NO. \$319.68 (D18191)	CC DISPL.	BORE	STROKE	REPL. PISTON \$159.84 (D0959)	REPL. RING SET \$34.95 (D7902)	REPL. RETAINER CLIP & PISTON PIN	GASKET KIT (Optional) \$61.79 (D8073)
CK179	1775cc	100mm	113mm	Fnt: 4878M10000 Rear: 4879M10000	1000XY	W5590 \$3.63 (D342) S655 \$13.60 (D618)	W6369

DOMESPECIFICATION
Valve pocket dimensions are measured from Deck Height.

Dome Volume: +13.5cc
Intake Pocket
Depth: -.120"
Diameter: 1.600"
Exhaust Pocket
Depth: -.120"
Diameter: 1.360"

All Wiseco rings can be used in cast iron, nickel ceramic platings (Nikasil), boron composite, and Electrofusion bores.
CAUTION: Wiseco 4-stroke rings can NOT be used in chrome plated bores. *Engine damage will occur.*

Type	Price	Bore Range	Top Ring	2nd Ring	Oil Ring (3-piece oil assemblies)
GF	\$34.95 (D7902)	93.54 - 105.61mm (3.683- 4.158")	1.2mm (.047") Alloy steel ferrox coated, chrome faced	1.2mm (.047") Cast iron phosphate coated, taper faced	3mm (.118") Stainless steel flex-vent spacer, chrome faced rails
VA	\$27.95 (D7761)	95-102mm (3.740-3.977")	1.2mm (.047") Alloy steel ferrox coated, chrome faced	1.5mm (.057") Cast iron phosphate coated, taper faced	3mm (.118") Stainless steel spacer, chrome faced rails
X	\$27.95 (D7761)	80.97 - 92.83mm (3.188 - 3.655")	1.58mm (.0625") Cast iron moly barrel faced	1.58mm (.0625") Cast iron taper faced, reverse torsion	3.9mm (.1525") Stainless steel flex-vent spacer, chrome faced rails
XG	\$27.95 (D7761)	75-83mm (2.953-3.268")	1mm (.039") Alloy steel ferrox coated, chrome faced	1mm (.039") Nodular iron phosphate coated, taper faced	2mm (.079") Stainless steel flex-vent spacer, chrome faced rails
XH	\$27.95 (D7761)	95-102mm (3.740-3.977")	1.2mm (.047") Alloy steel ferrox coated, chrome faced	1.5mm (.057") Cast iron phosphate coated, taper faced	4mm (.057") Stainless steel spacer, chrome faced rails
XK	\$24.95 (D7941)	98.42 - 99.19mm (3.875 - 3.905")	1.5mm (.057") Cast iron plasma moly faced	1.5mm (.057") Cast iron reverse torsion taper faced	2.5mm (.098") Stainless steel flex-vent spacer, chrome faced rails
XP	\$27.95 (D7761)	92.01 - 96.01mm (3.663 - 3.780")	1.5mm (.057") Cast iron plasma moly faced	1.5mm (.057") Cast iron reverse torsion taper faced	3mm (.118") Stainless steel flex-vent spacer, chrome faced rails
XS	\$32.43 (D6491)	95 - 104mm (3.740 - 4.094")	1.2mm (.047") Alloy steel ferrox coated, chrome faced	1.5mm (.057") Cast iron phosphate coated, taper faced	2mm (.079") Stainless steel flex-vent spacer, chrome faced rails
XY	\$34.95 (D7902)	95-100mm (3.740 - 3.937")	1.2mm (.047") Alloy steel, ferrox coated, chrome faced	1.5mm (.057") Cast iron phosphate coated, taper faced	3mm (.118") Stainless steel flex-vent spacer, chrome faced rails
ZB	\$55.08 (D5033)	107.95mm (4.250)	1.1mm (.043") Ductile iron, plasma moly face	No second ring	2mm (.079") Stainless steel flex-vent spacer, chrome faced rails



Piston Pins							
Part #	OD Inches	Length Inches	ID Inches	Weight grams	Str. Wall Tpr. Wall	Surface	Price
S530	0.791	2.200	0.512	80.50	SW	Chromed	\$13.95 (D738)
S521	0.791	2.598	0.512	95.30	SW	Chromed	\$13.95 (D738)
S535	0.791	2.835	0.512	103.90	SW	Chromed	\$13.95 (D738)
S572	0.792	2.000	0.512	73.10	SW	Chromed	\$13.95 (D738)
S534	0.792	2.201	0.512	102.70	SW	Chromed	\$13.95 (D738)
S548	0.792	2.825	0.512	102.70	SW	Chromed	\$13.95 (D738)
S594	0.927	2.250	0.630	104.80	SW	Chromed	\$13.95 (D738)
S619	0.866	2.000	0.543	89.50	SW	Non-Chromed	\$13.95 (D738)



Nylon Soft Hone Brushes					
Description mm	Description Inches	Part #	Brush Length	Overall Length	Price
45-57mm	1.77"-2.24"	W6075	2"	10"	\$42.01 (D0873)
57-70mm	2.24"-2.76"	W6076	3"	10"	\$43.44 (D0193)
63-76mm	2.48"-2.99"	W6077	4"	14"	\$54.51 (D0094)
76-89mm	2.99"-3.50"	W6078	4"	14"	\$56.79 (D1115)
89-102mm	3.50"-4.02"	W6079	4"	14"	\$56.79 (D1115)



Decals		
Part #	Description	Price
D-10	6 1/2"x21 1/2" Trailer Decal	\$1.25
D-11	2"x6 1/2" Decal	\$0.25
D-12	4 1/2"x10" Window Decal	\$1.00
D-14	2"x5" Wiseco Patch	\$0.75
D-17	2"x14 1/2" NASCAR Decal	\$0.50
D-18	1 1/2"x11 3/4" Fork Decal	\$2.00
D-19	9 1/2" Cycle Fender Decal	\$1.00
D-21	2 3/4"x6 1/2" Pro Tru Decal	\$0.50
D-22	Sheet of 2, 5 1/2" Decals	\$1.00
D-23	Sheet of 5, 2 1/2" High Temp Decals	\$1.00

Banners		
Part #	Description	Price
W1044	8'x3' Wiseco black and red on white	\$7.00
W5497	12'x3' Wiseco black and red on white	\$15.00

WISECO PISTON COMPANY, INC., LIMITED PISTON WARRANTY

WISECO warrants this product will be free from defects in material and workmanship for thirty (30) days following date of original purchase. If the product is found by WISECO to be defective, such products will, at WISECO'S option, be replaced or repaired at cost to WISECO. All products alleged by Purchaser to be defective must be returned to WISECO, postage prepaid, within thirty (30) days warranty period.

This limited warranty does not cover labor or other costs or expenses incidental to the repair and/or replacement of products or parts. This limited warranty does not apply to any product which has been used in a hi-performance application, or racing or is subject to misuse, mishandling, misapplication, neglect (including but not limited to improper maintenance), accident, improper installation, modification (including but not limited to use of unauthorized parts or attachments), or adjustment or repair performed by anyone other than WISECO.

The parties hereto expressly agree that the purchaser's sole and exclusive remedy against WISECO shall be for the repair or replacement of the defective product as provided in this limited warranty. This exclusive remedy shall not be deemed to have failed of its essential purpose so long as WISECO is willing and able to repair or replace defective goods.

THIS LIMITED WARRANTY IS IN LIEU OF ALL OTHER WARRANTIES, EXPRESS OR IMPLIED, INCLUDING THOSE OF MERCHANTABILITY OR FITNESS FOR A PARTICULAR PURPOSE NOT EXPRESSLY SET FORTH HEREIN. ANY PRODUCT WHICH MAY BE SOLD BY WISECO BUT WHICH IS NOT MANUFACTURED BY WISECO IS NOT WARRANTED BY WISECO, BUT IS SOLD ONLY WITH THE WARRANTIES, IF ANY, OF THE MANUFACTURERS THEREOF.

WISECO'S liability (whether under the theories of breach of contract or warranty, negligence or strict liability) for its products shall be limited to repairing or replacing parts found by WISECO to be defective, or at WISECO'S option, to refund the purchase price of such product. In no event shall WISECO be liable for incidental or consequential damages arising out of or in connection with the product. Consequential damages shall include, without limitation, loss of use, income or profit, or losses sustained as the result of injury (including death) to any person, or loss of or damage to property.

Any claim by purchaser regarding this product shall be deemed waived by the purchaser unless submitted in writing to WISECO within the earlier of (i) fifteen (15) days following the date Purchaser discovered, or by reasonable inspection should have discovered, any claimed breach of this limited warranty, or (ii) thirty (30) days following the date of original purchase. Any cause of action for breach of this limited warranty shall be brought within six months from the date the alleged breach was discovered or should have been discovered, whichever occurs first.

This limited warranty gives you specific legal rights, and you may also have other rights which vary from state to state.

White #W5986

Black #W5987

Script 100% Cotton Tee
(Logo front & back)
Available in adult M-XXL
White \$14.95 (D279)
Black \$15.95 (D7301)

#W5998

Black, embroidered Visor
One size fits all
\$14.95 (D279)



Ash #W5992

Black #W5993

Polo
Embroidered (Left chest)
Available in adult M-XXL
\$27.95 (D7181)

Ash #W5989

Black #W5990

Long sleeve Tee
100% Cotton
Logo front, back & sleeves
Available in adult M-XXL
\$21.95 (D7241)



* When ordering, please indicate part # - followed by size.



#W5991

Black, Heavy Sweatshirt
logo front & back
Available in adult L-XXL
\$29.95 (D7491)



Ash/Black #W6001

Black/Black #W6002

Wool & Leather sleeve
Letterman's Jacket
Embroidered front & back
Available in adult M-XXL
\$249.95 (D59912)



Black #W5996

Ash #W5997

Embroidered Beanie
One size fits all \$14.95 (D279)



#W6000

Black, Urban Jacket
logo front & back
Adult M-XXL
(Limited stock)
\$69.95 (D7454)



#W5999

Black, Nylon Jacket
w/Flannel Lining
logo front & back
Adult M-XXL
\$39.95 (D7952)



Ash/Black #W5995

Black/Black #W5994

Ash/Black Sandwich Bill Cap
& Black Twill Cap
Embroidered
One size fits all
\$14.95 (D279)



* When ordering, please indicate part # - followed by size.